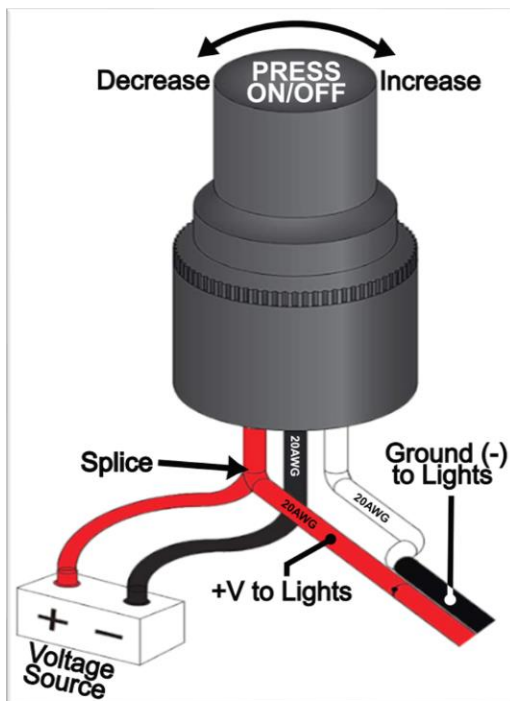
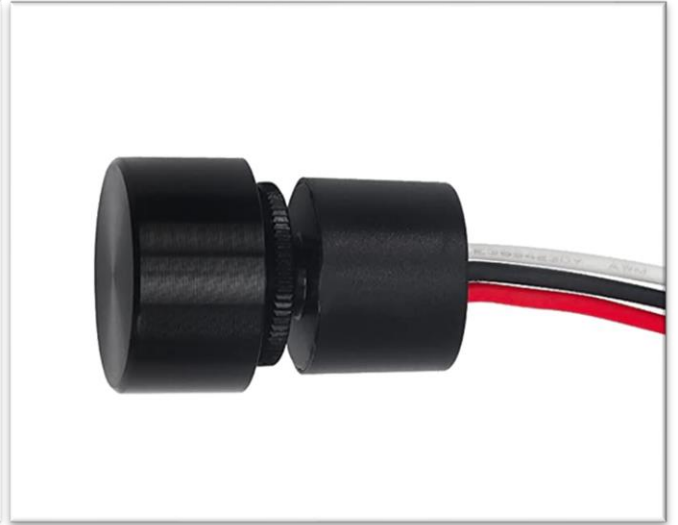
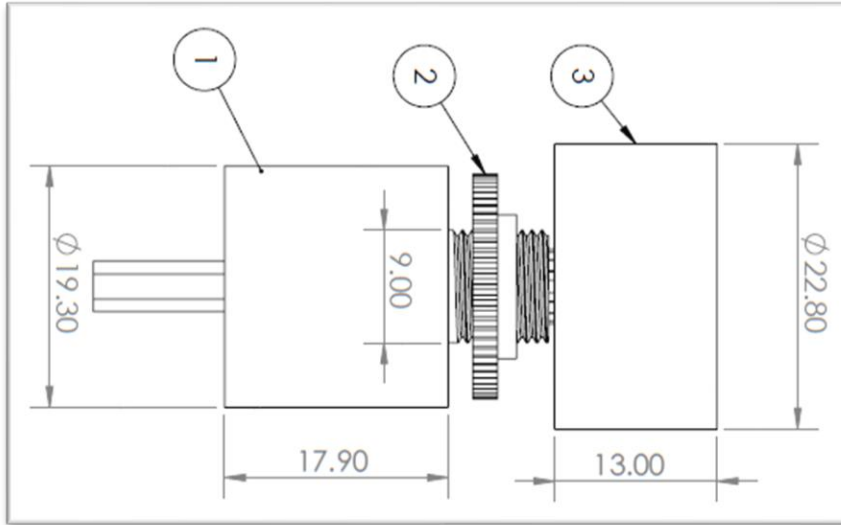




Digital Solid-State Rotary DC Dimmer/Voltage Controller; 6-30VDC



Specification:

Input Voltage Range:	6~30V DC
Output Voltage Range:	Vin~0.3V DC
Max Current Load:	2.0 Amps
Overcurrent Protection:	2.50 Amps
Dimming Method:	PWM-controlled buck regulation (11.718kHz)
Dimming Interface:	Rotary Encoder; Press-ON/OFF; non-volatile output memory
Preset Recall:	Retains last user-selected dimming level
Environmental:	IP65
Through Hole Dia:	0.375" dia
Panel Thickness (Max):	0.1875"
Pigtail Wire Gauge:	20AWG

Operation:

1. Initial State when power applied: OFF
2. Press knob to alternate ON/OFF
3. 20-step dimming/voltage variation: Slowly rotate clockwise to increase voltage/brightness; Rotate CCW to decrease voltage/brightness
4. Memory: Dimmer memorizes last voltage/dimming output level status (power OFF).